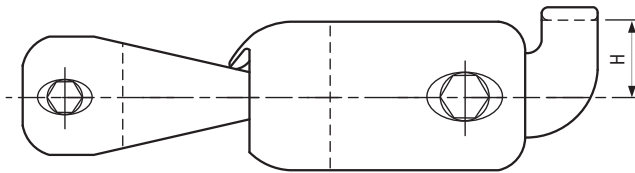
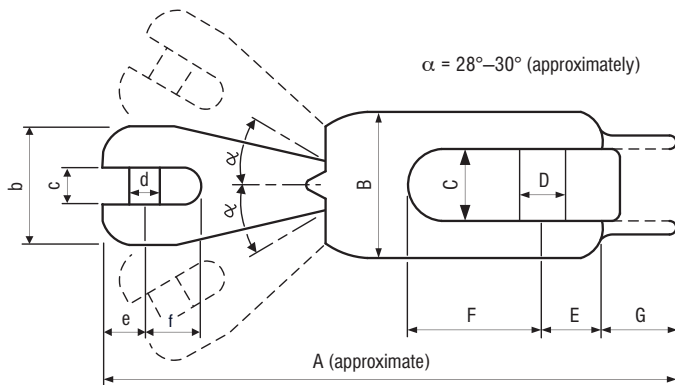


# Flip Swivel

side view



top view



TYPE #	CHAIN DIAMETER		WHOLE LENGTH APPROXIMATELY	chain part dimensions	ANCHOR PART DIMENSIONS	FLIPPING BRIDGE DIMENSIONS	BREAKING LOAD (*)		MAXIMUM ANCHOR WEIGHT
	mm	inch	mm	b×c×d×e×f	B×C×D×E×F	G×H	kN	lbf	kg
ufs 6–12	6	1/4"	121	25×7,6×7×9×11	35×16×11×13×31	14×17	38,4	8640	12
	6	1/4"							
ufs 8–21	8	5/16"	147,5	30×9,4×9×11×14,5	40×19×13×16×36,5	18,5×20	56,7	12740	21
	8	5/16"							
ufs 10–35	10	3/8"	168	35×11,6×11×13×17	45×21×14,5×18×40	21×22,5	90,7	20400	35
	10	3/8"							
ufs 13–60	12	1/2"	211,5	45×15,2×14,5×16,5×23	55×26×18×23×51,5	26,5×30	160,9	36200	60
	13	1/2"							
ufs 16–100	12	1/2"							
	13		250	53×18,2×18×20×27	65×30,6×22×27×59	33×36	236,5	53200	100
	14	5/8"							
	16	5/8"							
ufs 20–160	14	5/8"							
	16		309	65×23×22×26×34	~×38×26×32×72	40×40,5	321,5	72300	160
	18								
	20	3/4"							
ufs 26–250	18	3/4"							
	20		364	~×30×26×33×43	~×48×32×40×77	48×56	474,8	106700	250
	23								
	26	1"							
ufs 34–360	22	7/8"							
	26		–	–	–	–	~800	~180000	360
	30								
	34	1 5/16"							

- (\*) – Tested by RINA (except UFS 34–360).  
 – Safe Working Load = 0,5 × Breaking Load.  
 – One size bigger UFS can also be used with the same chain. Therefore one size bigger swivel should be selected for chains such as Grade 70 (G7).  
 – UFS selection should be based on the “Max. Anchor Weight”. If the “Max. Anchor Weight” is not enough, one size bigger UFS should be selected.  
 – Custom ones without the flipping bridge and flipping nub could also be made for symmetrical stockless anchors.